

# Ballinderreen



# kids

# Trail

*Go Discover  
Ballinderreen*

**COUNTY  
GALWAY**

**FOR KIDS  
BY KIDS**





10

Island  
Eddy

8

Ringelaun

6

Mulrook  
West

Kinvara  
Bay

7

9



Dunbulcaun Bay

Kilcolgan

R458

N67

N67

N67

Ballinaderreen

1

2

4

3

16

14

13

11

12

15

5

Map locations are indicative

Tyrone

Parkeighfer

Killeenaran

Ballyvullaun

Ballinaderreen Lower

Carfron

Crosheen

Muggaunagh

Frenchpark

creglucas

cregballymore

Pollagh

Tooreen West

Tooreen East

cloghballymore

Killeenavarra

Roymore

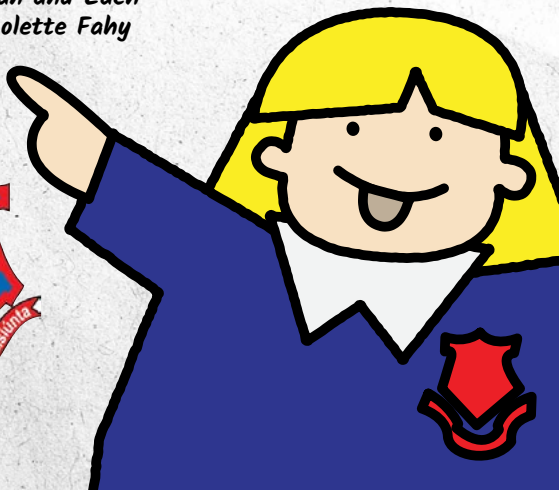


# Ballinderreen kids' Trail

*Go Discover Ballinderreen*

**3rd Class 2024 / 2025**

*Alison, Chloe, Ciara O'G., Ciara P., Éabha, Freya, Hannah,  
Iago, Jack, James, Katie, Laoise, Lars, Mila, Molly, Oskar,  
Rowan, Sean and Zach*  
Teacher: Colette Fahy



# Ballinderreen

**Photographs: 3rd Class 2024 / 2025 Ballinderreen National School, Karen Geoghegan from Kilcolgan Castle and Jen Troake.**

**Research and Text: 3rd Class 2024 / 2025 Ballinderreen National School**

**Project Managers and Editors: Colette Fahy, Ballinderreen National School and Marie Mannion, Heritage Officer, Galway County Council**

**Proofreading: Marianne ten Cate, Marie Mannion and Colette Fahy**

**Graphic Design: Damien Goodfellow**

**Funded by Galway County Council and the Heritage Council**



Comhairle Chontae na Gaillimhe  
Galway County Council



An Chomhairle Oidhreachta  
The Heritage Council

## DISCLAIMER

*This booklet is an information guide and does not act in any way as an invitation to any person to enter onto any of the properties listed. While every care has been taken to ensure accuracy in the compilation of this booklet, neither the writers, steering group or owners of the properties listed can accept responsibility for errors, omissions or inaccuracies. All information is received and published in good faith. All liabilities for loss, disappointment, negligence or any other damage caused by the reliance on information contained in this booklet, or in the event of bankruptcy or liquidation of any organisation, company, individual or firm mentioned, or in the event of any organisation, company, individual or firm ceasing to trade, is hereby excluded.*

## Introduction

*Ballinderreen is a small coastal parish in the south of County Galway. It is located about 22km south-east from Galway City. The Irish name for the village, Baile an Doirín, means 'town of the little oak'. We are very proud of our parish, which has great facilities such as the GAA grounds and playground, many areas of natural beauty like Island Eddy and Ballinderreen Turlough and sites of historical importance including Tyrone House and St Sourney's Well.*

*Visit our story map to discover more about Ballinderreen...*

*<https://storymaps.arcgis.com/stories/33a05a2553ea4179alcb17783e8443e7>*



# Ballinderreen



1

## Tyrone House

*Tyrone House was built in 1779 for Christopher St George, whose family owned much of the area around Kilcolgan at the time. The house was occupied by various generations of the St George family from the 1770s until around 1909. Tyrone House was destroyed by members of the local IRA unit during the Irish War of Independence in 1920. They believed it was going to be used by the 'Black and Tans' (British military) as an infirmary. The house was unoccupied at the time, except for a bed-bound caretaker who was taken safely from the house and left in another building on the grounds before the main house was set alight. The house was the inspiration for the book *The Big House of Inver* by Edith Somerville.*

1

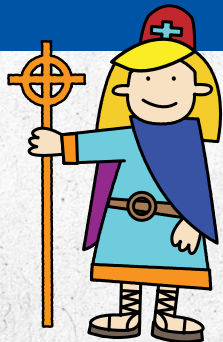


*Image courtesy of Karen Geoghegan*

## 2

### **Kilcolgan Castle**

*Kilcolgan Castle was built for Christopher St George in 1801. St George also owned the nearby Tyrone House and retired to Kilcolgan Castle after handing over Tyrone House to his son. The castle sits on the banks of the Kilcolgan River, also known as Dunkellin River, and it was erected on the site of a medieval castle. The grounds are spread out over nine acres and the outbuildings include a storage shed, a tack shed, a two-bedroom cottage and a two-bedroom chalet. Karen Geoghegan, the current owner, inherited the castle in 1996 from her father, who was a US ambassador to Sweden. While the castle is not open to the public, it can be rented for private stays and events.*



## 3

### St Sourney's Well

*St Sourney (Sairnait in Irish) is the patron saint of the holy well and medieval church at Drumacoo. Sourney was a holy woman who lived in Ireland during the sixth century and Ballinderreen National School is also named after her. The well was traditionally a place of pilgrimage.*

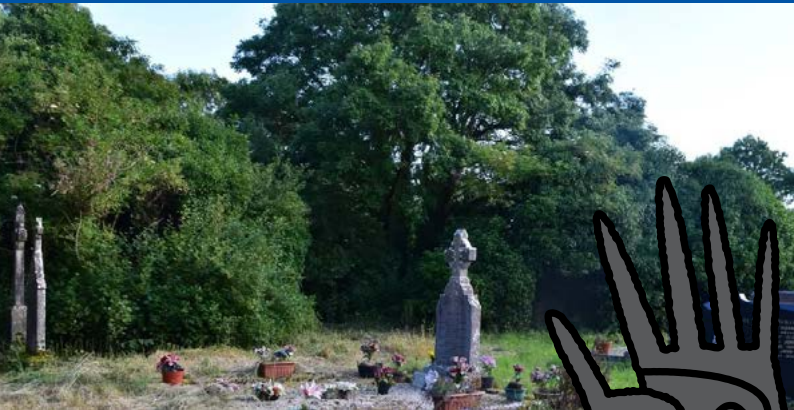
*It has been said that the water from St Sourney's well was an effective cure for a pain in the head. Those seeking help used to follow the correct steps to make sure it worked. There were three visits to be made on a Monday, Thursday and the following Monday. On the way to the well, the Joyful Mysteries of the Rosary were recited. The Sorrowful Mysteries were said while walking around the well and the Glorious Mysteries were said on the way home. As people left the well on the first day, they took away something, such as water, clay or a pebble. These were left back on the final visit, while a coin was also dropped into the well. The final step was to take a bottle of water from the well and wash one's forehead with it every day.*



## 4

### St Sourney's Church and Bed (Drumacoo)

*It is believed that St Sourney founded the monastic settlement at Drumacoo in the 6th century. The ruins of a medieval church and a dramatic 19th century gothic revival-style mausoleum remain today. Sourney is also thought to have been buried here, at the site known as St Sourney's Bed. Unfortunately, Sourney's grave is believed to have been destroyed during a graveyard clean-up in the 1980s and stones from the bed were unwittingly used to build up the well.*



## 5 Killeenavara Cemetery (also known as 'The Long Black Hand' Graveyard)

*Killeenavara cemetery was once home to Ballinderreen's very own ghost! 'The Long Black Hand' was rumoured to be an evil spirit who made life miserable for the people of Ballinderreen a few hundred years ago. According to local legend, this female ghost killed everyone who passed by her from sunset until dawn and her victims were found dead on the side of the road. Richard Cronnelly's famous poem 'The Long Black Hand' tells the story of the slaying of the spiteful spirit.*





## 6

### Mulrook West

*There are lots of fun things to do at the sea in Mulrook West, such as crab fishing, swimming, collecting shells and skimming stones. Mulrook has a stretch of sand with crushed shells that is perfect for a picnic on a lovely summer day. There is also an old abandoned building there; make sure to go inside and look out across the bay from the window. The rocks beside it form a loosely-constructed pier and you might see a traditional curragh moored here. If you walk out to the end of the pier, the views of Island Eddy, Kinvara, Galway City and the mountains in County Clare are excellent. We also think Mulrook has some of the most beautiful sunsets you will ever see.*

# Ballinderreen



# 7

## Pollagh pier

*Pollagh pier is very popular with the locals, particularly for water activities and dog walking. The pier is no longer in use, but the bay is a good place to swim when the tide is high. Pollagh is one of a number of very scenic spots in Ballinderreen, with great views of Kinvara and the Burren in County Clare.*

# 7



## 8

### **Killeenaran pier**

*Killeenaran pier is another fun place for kids in Ballinderreen. During the summer, it is very busy with people swimming and pier jumping. Killeenaran is also great for crab fishing and we love going for walks along the sea shore. You can see lots of different birds such as Oystercatchers, Curlews, Grey Herons and at least four species of gulls. During low spring tides, a long sand-spit appears between Killeenaran and Island Eddy, allowing people to walk out to the island.*

# Ballinderreen



9

## Tarrea pier

*Tarrea pier stretches out far into the water, providing beautiful views of the surrounding countryside. It was built primarily to support the local fishing industry and seaweed harvesting and was one of several quays and piers constructed in south-west Galway. The pier is still in use today, showing the importance of fishing to the area. The pier is very popular with local swimmers and is great for pier jumping. We also think it's a great place to go for a walk, take some lovely photographs and check out the local flora and fauna.*

9



## 10 Island Eddy

*Island Eddy is a small island located just off the coast of Ballinderreen. The island's population peaked at 125 people in 1841 and the last residents left in the early 1980s. While the ruins of some homes and sheds can be seen, two of the houses have been renovated in recent years. Although you usually need a boat to get to the island, there is a long sand-spit on the east of the island that allows access by foot from Killeenaran at low spring tides. It is known locally as 'the cush' and every year, many locals and visitors enjoy a walk out to Island Eddy. Go and visit the cute donkeys and check out the lovely beach.*

# Ballinderreen



## 11 Ballinderreen GAA Grounds

*Ballinderreen Hurling Club was founded in 1884 and is one of the oldest clubs in the GAA. Ballinderreen Camogie Club was set up in 1968 and in 2022 Ballinderreen One Club was formed. There are wonderful facilities for everyone in the GAA grounds and we are so lucky to have them in our parish. There are two full-sized pitches available for training and matches, along with an astro turf pitch, handball walls, a basketball court and a running and walking track.*



## 12 Ballinderreen Playground

*Ballinderreen GAA club cares about all aspects of play, not just sports, for the young people of our community. This is why there is a playground to encourage play from an early age. The playground in Ballinderreen was officially opened on Sunday, the 23rd of October, 2016. The whole community gathered to celebrate the opening and the parish priest gave a blessing. The playground has three swings, a slide, two hammocks, a spinning chair, a zipline and a sand pit.*



## 13 St Colman's Church

*St Colman's Church, the Roman Catholic Church in Ballinderreen, was first built in 1854 and reconstructed in 1973. The church is located directly across the road from the school in the village and our Parish Priest is Father Hugh Clifford. The church is an important part of the community, with ceremonies such as christenings, communions, confirmations, weddings and funerals being held there. Sometimes, we visit the church with our school for mass, Christmas carol services and other special occasions. The grounds of the church are lovely, with lots of large trees all around. We love to collect conkers from the Horse Chestnut tree in Autumn.*



## 14 Ballinderreen National School (St Sourney's NS) and Garden

*Our school is named after St Sourney and was built in 1857, making it one of the oldest schools in Ireland. It is so old that the main part of the school is a protected building, due to the architectural beauty of the cut stone. Have you ever visited our school garden? There is so much to see and do. In the middle, we have colourful benches for when we want to take our learning outside and there are lots of pollinator plants to attract bees and butterflies. We can use the wooden planters to grow our own vegetables and learn about growing. And, every week, Jen Troake comes to the school for gardening club. She works with the student volunteers on maintaining the school garden for us all.*



## Blake Manor Nursing Home (Cloughballymore House)

# 15

*The grounds of Blake Manor Nursing Home include a medieval castle (Cloughballymore Castle) and a Georgian mansion. Cloughballymore was a tower house of the Kilkelly family, a powerful clan of Anglo-Norman origin, in the 16th century. Later it was owned by the Blake family, who added a mansion house to the existing building. The tower house has four storeys with several narrow windows and the walls are about 1.5 metres thick.*

*The mansion house is a two-storey building and is connected to the tower house by a lower wing. The estate was once used as a seminary for the Society of African Missions. In the 1950s it was sold and became a hotel, Cloughballymore Golf and Country Club. After the hotel closed down in the 1980s, it was converted to a nursing home, St Columba's. In 2008, it was renovated and in 2013 it was renamed Blake Manor Nursing Home in tribute to the Blake family who previously lived here. Blake Manor sits on 17 acres of land, with a stunning four-acre orchard. There is also a large grotto on the grounds and the original chapel in the main building is still used by residents and relatives.*



*Image courtesy of Jen Troake*

## 16 Ballinderreen Turlough

*The word turlough comes from the Irish tuar loch, meaning 'disappearing lake'; we are very lucky to have our own turlough in Ballinderreen. The area around the turlough has many features in common with the Burren in County Clare, including limestone pavement. Rare plants found at Ballinderreen Turlough include Fen Violet, a Red Data Book endangered species, Water Germander and Marsh Fern. It is also a great spot for bird watching, where you can see Mediterranean and Common Gulls, Yellowhammers, Golden Plovers and many more. In 1996, the fifth and sixth class students of Ballinderreen NS won the All-Ireland Esso Schools Wildlife Project for their report on the turlough.*

# Ballinderreen kids' County Galway



# Trail

*Go Discover  
Ballinderreen*

# FOR KIDS BY KIDS



Comhairle Chontae na Gaillimhe  
Galway County Council



An Chomhairle Oidhreachta  
The Heritage Council